



FAKKSG_ORDERS D.01B out

based on

ORDERS

Purchase order message

EANCOM® 2002 S4; D.01B

- **Message Description**
- **Branching Diagram**
- **Segment Details**
- **Example message**
- **List of changes**

Version 1.0
Variant final
Version date 26.08.2024

Documentation conventions

Format

as described in column "Format" of segment details

Character type:

a :alphabetic characters

n :numeric characters

an :alpha-numeric characters

Status indicators

as described in column "St" of segment details

(R)quired

Indicates that the entity is required and must be sent. (This status is set by EANCOM®.)

(O)ptional

Indicates that the entity is conditional and may be sent at the discretion of the user.

(D)ependent

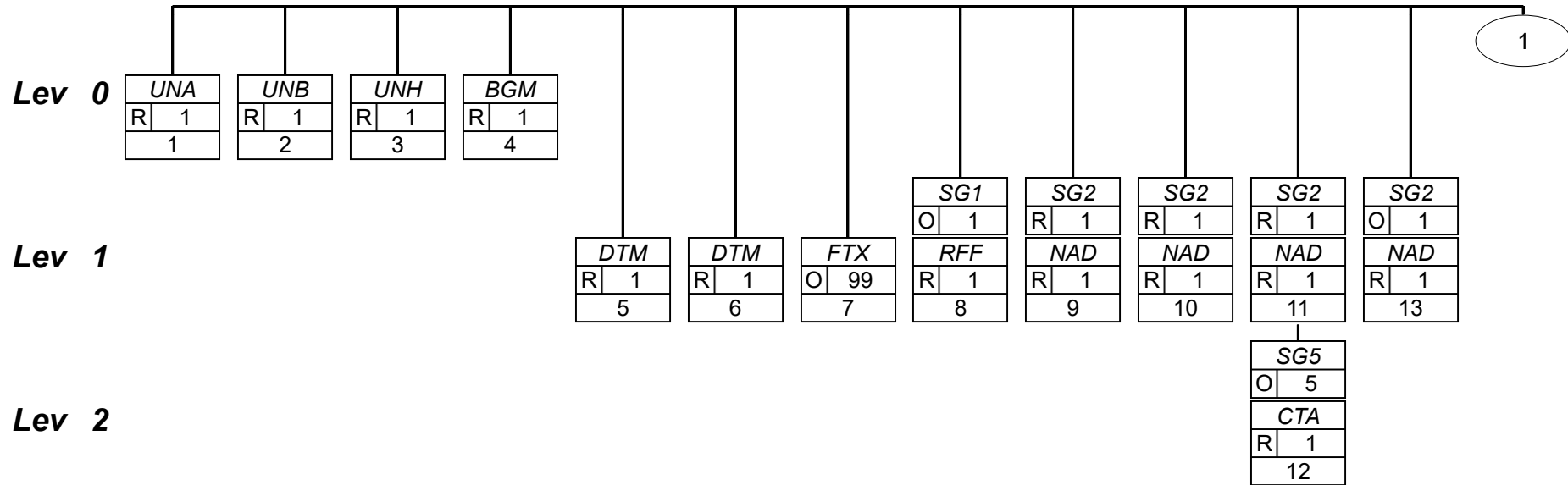
Indicates that the entity must be sent in certain conditions, as defined by the relevant explanatory note.

(N)ot used

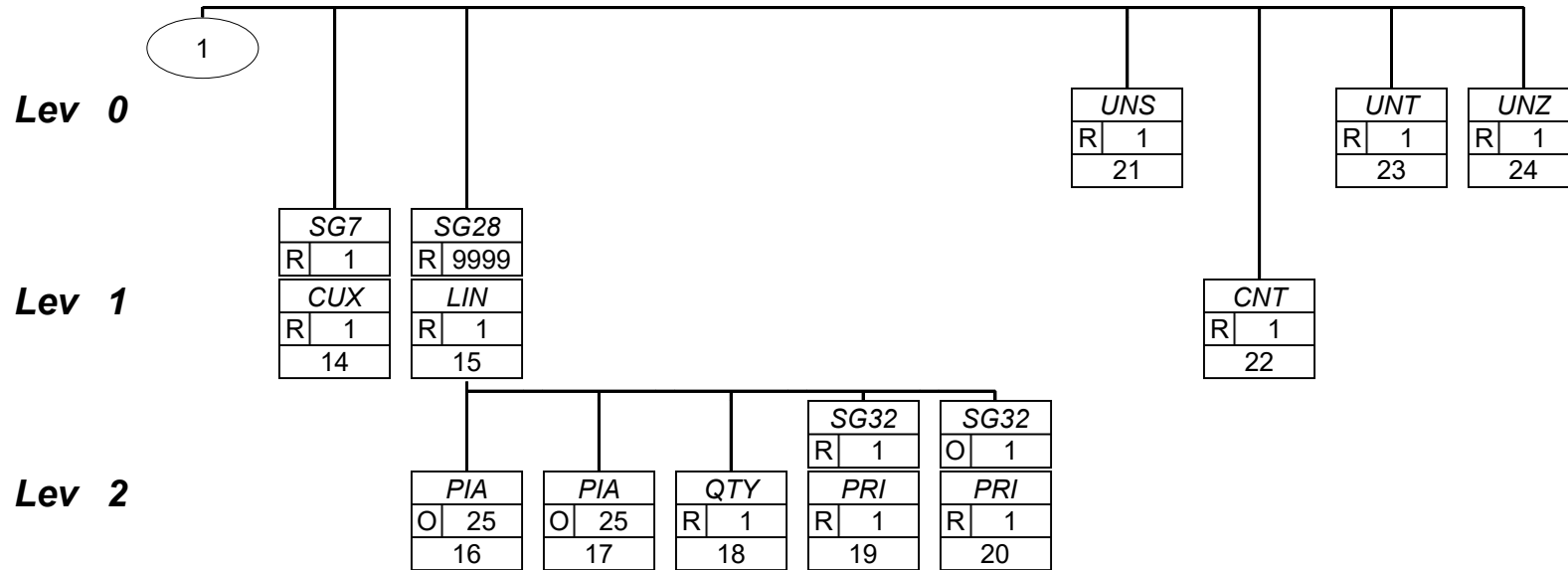
Indicates that the entity is not used.

FAKKSG_ORDERS D.01B out

Branching diagram



Branching diagram



Segments Layout

Segment **UNA** No.: 1 Level: 0
 Status R Max. occ.: 1

Description Service string advice

Description	Manor	Example	Remarks
UNA1 Component data element separator	R an1	:	Used as a separator between component data elements contained within a composite data element (value ":").
UNA2 Data element separator	R an1	+	Used to separate two simple or composite data elements (value: "+").
UNA3 Decimal mark	R an1	.	Used to indicate the character used for decimal notation (value: ".").
UNA4 Release character	R an1	?	Used to restore any service character to its original specification (value: "?").
UNA5 Repetition separator	R an1	'	Used to indicate the character used for repetition separation (value: " ' ").
UNA6 Segment terminator	R an1	'	Used to indicate the end of segment data (value: " ' ").

This segment is used to inform the receiver of the interchange about the set of service characters (and decimal mark) which are being used. It must immediately precede the UNB segment and contains the five service characters (positions UNA1, UNA2, UNA3, UNA4, UNA5 and UNA6) selected by the interchange sender. When expressing the service characters in the UNA segment, it is not necessary to include any element separators. Within EANCOM®, using the default set of Service characters, the use of the UNA segment is not required.

Example:

UNA:+.? '

Segments Layout

Segment

UNB

No.: 2
Status R

Level: 0
Max. occ.: 1

Description Interchange header

Description	Manor	Example	Remarks
S001 Syntax identifier	R		
0001 Syntax identifier	R a4	+UNOC	UNOC UN/ECE level C As defined in ISO 8859-1 : Information processing - Part 1: Latin alphabet No. 1.
0002 Syntax version number	R an1	:3	
S002 Interchange sender	R		
0004 Interchange sender identification	R an..35	+7612096000005	Manor GLN 7612096000005 = productive GLN 7612096000487 = test GLN
0007 Identification code qualifier	R an..4	:14	14 GS1 Partner identification code assigned by GS1.
S003 Interchange recipient	R		
0010 Interchange recipient identification	R an..35	+7600123459872	
0007 Identification code qualifier	R an..4	:14	14 GS1 Partner identification code assigned by GS1. ZZ Mutually defined
0014 Interchange recipient internal identification	O an..35	:7600123456789	
S004 Date and time of preparation	R		
0017 Date	R n8	+240722	Format n6 yyMMdd
0019 Time	R n4	:1114	hhmm
0020 Interchange control reference	R an..14	+123456	
0035 Test indicator	D n1	+1'	

Example:

UNB+UNOC:3+7612096000005:14+7600123459872:14:7600123456789+240722:1114+123456+++++1' - rerouting GLN included

UNB+UNOC:3+7612096000005:14+7600123456789:14+240722:1114+123456+++++1' - without rerouting GLN

Segments Layout

Segment

UNH

No.: 3
Status R

Level: 0
Max. occ.: 1

Description Message header

Description	Manor	Example	Remarks
0062 Message reference number	R an..14	+1	Sender's unique message reference.
S009 Message identifier	R		
0065 Message type	R an..6	+ORDERS	ORDERS Purchase order message
0052 Message version number	R an..3	:D	D Draft version/UN/EDIFACT Directory
0054 Message release number	R an..3	:01B	01B Release 2001 - B
0051 Controlling agency, coded	R an..3	:UN	UN UN/CEFACT
0057 Association assigned code	R an..6	:EAN010'	EAN010 EAN version control number (EAN Code)

Example:

UNH+1+ORDERS:D:01B:UN:EAN010'

Segments Layout

Segment

BGM

No.: 4
Status R

Level: 0
Max. occ.: 1

Description Beginning of message

Description	Manor	Example	Remarks
C002 Document/message name	R		
1001 Document name code	R an..3	+26E	26E Consignment issue (GS1 Permanent Code) Document/message providing details of a consignment issue which has been raised by a buyer.
3055 Code list responsible agency code	R an..3	:9	9 GS1
C106 Document/message identification	R		
1004 Document identifier	R an..35	+P000001234	document number
1225 Message function code	R an..3	+9'	9 Original Initial transmission related to a given transaction.

Example:

BGM+26E::9+P000001234+9'

Segments Layout

Segment **DTM**
 No.: 5 Level: 1
 Status R Max. occ.: 1

Description Date/time/period

Description	Manor	Example	Remarks
C507 Date/time/period	R		
2005 Date or time or period function code qualifier	R an..3	+137	137 Document/message date/time (2006) Date/time when a document/message is issued. This may include authentication.
2380 Date or time or period value	R an..35	:20240101000000	
2379 Date or time or period format code	R an..3	:204'	204 CCYYMMDDHHMMSS

Example:

DTM+137:20240101000000:204'

Segments Layout

Segment

DTM

No.: 6 Level: 1
 Status R Max. occ.: 1

Description Date/time/period

Description	Manor	Example	Remarks
C507 Date/time/period	R		
2005 Date or time or period function code qualifier	R an..3	+263	263 Invoicing period Period for which an invoice is issued.
2380 Date or time or period value	R an..35	:20240415- 20240421	
2379 Date or time or period format code	R an..3	:718'	718 CCYYMMDD-CCYYMMDD Format of period to be given without hyphen.

Example:

DTM+263:20240415-20240421:718'

Segments Layout

Segment

FTX

No.: 7
Status O

Level: 1
Max. occ.: 99

Description Free text

Description	Manor	Example	Remarks
4451 Text subject code qualifier	R an..3	+ZZZ	ZZZ Mutually defined Note contains information mutually defined by trading partners.
C107 Text reference	O		
4441 Free text value code	R an..17	+380	380 Invoice An invoice must be issued to Manor for this qualifier 381 Credit note A credit note must be issued to Manor for this qualifier
C108 Text literal	R		
4440 Free text value	R an..51	+Prozent'	

Example:

FTX+ZZZ++380+Prozent'

Segments Layout

Group **SG1** Status O Max. occ.: 1 RFF+ON

Segment **RFF** No.: 8 Level: 1
Status R Max. occ.: 1

Description Reference

Description	Manor	Example	Remarks
C506 Reference	R		ON Order number (buyer) [1022] Reference number assigned by the buyer to an order.
1153 Reference code qualifier	R an..3	+ON	
1154 Reference identifier	R an..70	:P000001234'	

Example:

RFF+ON:P000001234'

Segments Layout

Group **SG2** Status R Max. occ.: 1 NAD+BY

Segment **NAD** No.: 9 Level: 1
Status R Max. occ.: 1

Description Name and address

Description	Manor	Example	Remarks
3035 Party function code qualifier	R an..3	+BY	BY Buyer Party to whom merchandise and/or service is sold.
C082 Party identification details	R		
3039 Party identifier	R an..35	+7612096831272	GLN - Format n13
3055 Code list responsible agency code	R an..3	:9'	9 EAN (International Article Numbering association)

Example:

NAD+BY+7612096831272::9'

Segments Layout

Group **SG2** Status R Max. occ.: 1 NAD+SU

Segment **NAD** No.: 10 Level: 1
Status R Max. occ.: 1

Description Name and address

Description	Manor	Example	Remarks
3035 Party function code qualifier	R an..3	+SU	SU Supplier Party who supplies goods and/or services.
C082 Party identification details	R		
3039 Party identifier	R an..35	+7610441000007	GLN - Format n13
3055 Code list responsible agency code	R an..3	:9'	9 EAN (International Article Numbering association)

Example:

NAD+SU+7610441000007::9'

Segments Layout

Group **SG2** Status R Max. occ.: 1 NAD+DP

Segment **NAD** No.: 11 Level: 1
Status R Max. occ.: 1

Description Name and address

Description	Manor	Example	Remarks
3035 Party function code qualifier	R an..3	+DP	DP Delivery party (3144) Party to which goods should be delivered, if not identical with consignee.
C082 Party identification details	R		
3039 Party identifier	R an..35	+7612096834792	GLN - Format n13
3055 Code list responsible agency code	R an..3	:9'	9 EAN (International Article Numbering association)

Example:

NAD+DP+7612096834792::9'

Segments Layout

Group **SG2** Status R Max. occ.: 1 NAD+DP

Group **SG5** Status O Max. occ.: 5 CTA

Segment **CTA** No.: 12 Level: 2
Status R Max. occ.: 1

Description Contact information

Description	Manor	Example	Remarks
3139 Contact function code	R an..3	+WH	WH Warehouse The warehouse contact within an organization.
C056 Department or employee details	R		
3412 Department or employee name	R an..35	:GENN-529'	

Example:

CTA+WH+:GENN-529'

Segments Layout

Group **SG2** Status O Max. occ.: 1 NAD+IV

Segment **NAD** No.: 13 Level: 1
Status R Max. occ.: 1

Description Name and address

Description	Manor	Example	Remarks
3035 Party function code qualifier	R an..3	+IV	IV Invoicee (3006) Party to whom an invoice is issued.
C082 Party identification details	R		
3039 Party identifier	R an..35	+7612096831272	GLN - Format n13
3055 Code list responsible agency code	R an..3	:9'	9 EAN (International Article Numbering association)

Example:

NAD+IV+7612096831272::9'

Segments Layout

Group **SG7** Status R Max. occ.: 1 CUX

Segment **CUX** No.: 14 Level: 1
Status R Max. occ.: 1

Description Currencies

Description	Manor	Example	Remarks
C504 Currency details	R		
6347 Currency usage code qualifier	R an..3	+2	2 Reference currency The currency applicable to amounts stated. It may have to be converted.
6345 Currency identification code	R an..3	:CHF	ISO 4217 three alpha.
6343 Currency type code qualifier	R an..3	:9'	9 Order currency The name or symbol of the monetary unit used in an order.

Example:
CUX+2:CHF:9'

Segments Layout

Group **SG28** Status R Max. occ.: 9999 LIN-PIA-QTY-SG32

Segment **LIN** No.: 15 Level: 1
Status R Max. occ.: 1

Description Line item

Description	Manor	Example	Remarks
1082 Line item identifier	R an..6	+1	Application generated number of the count of the order lines.
C212 Item number identification	R		
7140 Item identifier	R an..35	+7612345000206	GTIN: EAN-8, UPC-A or EAN-13
7143 Item type identification code	R an..3	:SRV'	SRV GS1 Global Trade Item Number A unique number, up to 14-digits, assigned according to the numbering structure of the GS1 system. 'GS1' stands for the 'Global Standards One'.

Example:

LIN+1++7612345000206:SRV'

Segments Layout

Group **SG28** Status R Max. occ.: 9999 LIN-PIA-QTY-SG32

Segment **PIA** No.: 16 Level: 2
Status O Max. occ.: 25

Description Additional product id

Description	Manor	Example	Remarks
4347 Product identifier code qualifier	R an..3	+1	1 Additional identification Information which specifies and qualifies product identifications.
C212 Item number identification	R		
7140 Item identifier	R an..35	+253	
7143 Item type identification code	R an..3	:GB'	GB Buyer's internal product group code Product group code used within a buyer's internal systems.

Example:
PIA+1+253:GB'

Segments Layout

Group **SG28** Status R Max. occ.: 9999 LIN-PIA-QTY-SG32

Segment **PIA** No.: 17 Level: 2
Status O Max. occ.: 25

Description Additional product id

Description	Manor	Example	Remarks
4347 Product identifier code qualifier	R an..3	+1	1 Additional identification Information which specifies and qualifies product identifications.
C212 Item number identification	R		
7140 Item identifier	R an..35	+123456	
7143 Item type identification code	R an..3	:SA'	SA Supplier's article number Number assigned to an article by the supplier of that article.

Example:

PIA+1+123456:SA'

Segments Layout

Group **SG28** Status R Max. occ.: 9999 LIN-PIA-QTY-SG32

Segment **QTY** No.: 18 Level: 2
Status R Max. occ.: 1

Description Quantity

Description	Manor	Example	Remarks
C186 Quantity details	R		
6063 Quantity type code qualifier	R an..3	+153	153 Statistical sales quantity Quantity of goods sold in a specified period.
6060 Quantity	R an..35	:1	
6411 Measurement unit code	D an..3	:PCE'	PCE Piece CMT centimetre KGM kilogram LTR litre (1 dm3) MTR metre MTK square metre CT carton This DE is only used if the product being identified is of variable quantity. If no measurement unit was sent, the measurement unit is regarded as piece.

Important

No decimal places are allowed to be sent here.

Example:

QTY+153:1:PCE'

Segments Layout

Group **SG28** Status R Max. occ.: 9999 LIN-PIA-QTY-SG32

Group **SG32** Status R Max. occ.: 1 PRI+AAA

Segment **PRI** No.: 19 Level: 2
Status R Max. occ.: 1

Description Price details

Description	Manor	Example	Remarks
C509 Price information	R		
5125 Price code qualifier	R an..3	+AAA	AAA Calculation net
5118 Price amount	R n..15	:14.58	
5375 Price type code	C an..3	:CT'	CT Contract Code specifying the contract price.

Example:

PRI+AAA:14.58:CT:RTP'

Segments Layout

Group	SG28	Status R	Max. occ.: 9999	LIN-PIA-QTY-SG32
Group	SG32	Status O	Max. occ.: 1	PRI+AAE
Segment	PRI	No.: 20 Status R	Level: 2 Max. occ.: 1	

Description Price details

Description	Manor	Example	Remarks
C509 Price information	R		
5125 Price code qualifier	R an..3	+AAE	AAE Information price, excluding allowances or charges, including taxes The price stated is for information purposes only and excludes all allowances and charges. Taxes however are included in the price.
5118 Price amount	R n..15	:29.95'	

Example:
PRI+AAE:29.95::RTP'

Segments Layout

Segment

UNS

No.: 21 Level: 0
 Status R Max. occ.: 1

Description Section control

Description	Manor	Example	Remarks
0081 Section identification	R a1	+S'	S Detail/summary section separation

Example:

UNS+S'

Segments Layout

Segment

CNT

No.: 22 Level: 1
 Status R Max. occ.: 1

Description Control total

Description	Manor	Example	Remarks
C270 Control	R		
6069 Control total type code qualifier	R an..3	+2	2 Number of line items in message
6066 Control total value	R n..18	:4'	

Example:
 CNT+2:4'

Segments Layout

Segment **UNT**
 No.: 23 Level: 0
 Status R Max. occ.: 1

Description Message trailer

Description	Manor	Example	Remarks
0074 Number of segments in a message	R n..10	+21	
0062 Message reference number	R an..14	+1'	The message reference number detailed here should equal the one specified in the UNH segment.

Example:
 UNT+21+1'

Segments Layout

Segment **UNZ**
 No.: 24 Level: 0
 Status R Max. occ.: 1

Description Interchange trailer

Description	Manor	Example	Remarks
0036 Interchange control count	R n..6	+1	The total number of messages in the interchange is detailed here.
0020 Interchange control reference	R an..14	+123456'	The interchange reference detailed here should equal the one specified in the UNB segment.

Example:

UNZ+1+123456'

Example

UNA:+.? '
UNB+UNOC:3+7612096000005:14+7600123459872:14:7600123456789+240722:1114+123456+++++1'
UNH+1+ORDERS:D:01B:UN:EAN010'
BGM+26E::9+P000001234+9'
DTM+137:20240101000000:204'
DTM+263:20240415-20240421:718'
FTX+ZZZ++380+Prozent'
RFF+ON:P000001234'
NAD+BY+7612096831272::9'
NAD+SU+7610441000007::9'
NAD+DP+7612096834792::9'
CTA+WH+:GENN-529'
NAD+IV+7612096831272::9'
CUX+2:CHF:9'
LIN+1++7612345000206:SRV'
PIA+1+253:GB'
PIA+1+123456:SA'
QTY+153:1:PCE'
PRI+AAA:14.58:CT'
PRI+AAE:29.95'
UNS+S'
CNT+2:4'
UNT+21+1'
UNZ+1+123456'