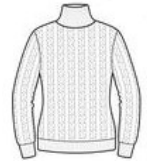


## Product specific requirements: 005. 2nd Layer Casual knitted

Version: 3.1  
Last update: 10.06.2022

Material	Material Art	Products	Age Group	HS Code
Fibers	Knitted	Pullovers, Cardigans, Vest, Dresses and similar knitted items	women, men kids, baby	6103, 6104, 6110, 6111

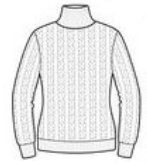


No	Parameter	Method	Reference	Age group	Requirement	Materials			
						Plastics - PU, PVC, Rubber, TPU	Textiles Natural	Textiles Synthetic	PU Coating, Printing
<b>General &amp; Construction</b>									
1	Fiber composition	EU (Nr) 1007/2011	Ginetex (CH)	/	Single: No tolerance Blends: +/-3% deviation from composition; Max. +/- 2% presence of Extraneous fibers		x	x	
2	Cords and drawstrings on children's clothing	SN EN 14682	SR 817.023.41 (CH)	Till 14 years	Must fulfil requirements	Related to the whole product			
<b>Chemical Parameters</b>									
3	Formaldehyde	Textile: DIN EN ISO 14184-1 Leather: DIN EN ISO 17226-2	EU REACH Annex XVII Entry 72 Oekotex	/	Baby till 3 : n.d. Adults Textile: 75 mg/kg		x	x	x
4	pH value	Textile: DIN EN ISO 3071 Leather: DIN EN ISO 4045	Oekotex	/	Textile: Direct Skin Contact: 4.0-7.5 Textile: Indirect Skin Contact: 4.0-9.0 Leather: 3.5-7.5		x	x	
5	Lead in Surface treatment on textile	Non-leather: EN 16711-1 Leather: ISO 17072-2	SR 817.023.41 SR 814.81 (CH)	/	Paints and varnishes: 100 mg/kg; Surface treatment on Textile: Not detected (5mg/kg)	x			x
6	Cadmium in Textile	EN 16711-1	SR 814.81 (CH)	/	Plastic: 100 mg/kg Surface coating/paint on article: 1000 mg/kg	x			x
7	Azo-Dyes* (Appendix)	Textile: DIN EN 14362-1 Leather: DIN ISO 17234-1 4-aminoazobenzene Textile: DIN EN 14362-3 Leather: DIN ISO 17234-1	SR 817.023.41 (CH)	/	max. 30 mg/kg each		x	x	x
8	Phthalates* (Appendix)	ISO 14389	SR 817.023.41	< 36 months	Baby (<36 months) DEHP / DBP / BBP / DIBP / DIHP / DMEP / DiPP / DnPP / DnHP/ DCHP/ DIOP/ DINP/ DIDP/ DNOP: 1000 mg/kg (Each or Total)  Other age range: DEHP / DBP / BBP / DIBP / DIHP / DMEP / DiPP / DnPP / DnHP/ DCHP/ DIOP: 1000 mg/kg (Each or Total)	x			x
11	PAHs *(Appendix)	AfPS GS 2019:01 PAK	SR 814.81 (CH)	/	EU PAH each < 0,5 mg/kg / Total sum < 10 mg/kg	x			x
12	Organic Tin Compounds (only for plastic, coating)	Textile: ISO 22744-1 Non-textile: CEN ISO/TS 16179	SR 814.81 (CH)	/	Tri-substituted organostannic compounds 1000 mg/kg DBT: 1000 mg/kg DOT: 1000 mg/kg	x			x
13	Dimethylfumarat	ISO/TS 16186	SR 814.81 (CH)	/	0,1mg/kg		x	x	
14	Penta-, Tetra-, Trichlorphenol (PCP / TeCP / TriCP)	Textile / Leather: LFGB § 64 BVL B82.02.8 Leather: ISO 17070; Polyester / polyester-blend / printed fabric: Modified § 64 LFGB BVL B82.02.8 with alkaline digestion	ChemVerbots V Oekotex SR 814.81 (CH) Annex 1.2	/	PCP, TeCP: not merely unavoidable impurities: 5 mg/kg		x		x

## Product specific requirements: 005. 2nd Layer Casual knitted

Version: 3.1  
Last update: 10.06.2022

Material	Material Art	Products	Age Group	HS Code
Fibers	Knitted	Pullovers, Cardigans, Vest, Dresses and similar knitted items	women, men kids, baby	6103, 6104, 6110, 6111

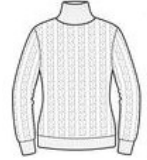



No	Parameter	Method	Reference	Age group	Requirement	Materials			
						Plastics - PU, PVC, Rubber, TPU	Textiles Natural	Textiles Synthetic	PU Coating, Printing
<b>Physical Parameter</b>									
15	Weight per m2	Woven. ISO 3801	Manor intern	/	+/- 5%	Related to the whole product			
16	Bursting Strength Exempt: Elastic, hollow mesh and lace	ISO 13938-2[KPa]	Manor intern	/	weight ≤ 200 g/m <sup>2</sup> : 200 kPa weight > 200 g/m <sup>2</sup> : 300 kPa	Related to the whole product			
17	Color fastness to Laundering (washing)/ dry Cleaning (if applicable) ( 1 Wash)	ISO 105/ C06	Manor intern	/	Grade 4 Polyamide Grade 3-4		x	x	
18	Appearance after washing (1 Wash)	Visual examination	Manor intern	/	<b>Satisfactory</b> - No loose fibers, degumming, blistering for adhesive position; - No damage, detachment, corrosion, deformation, obvious color change, seam opening after washing.		x	x	
19	Dimensional stability after washing (1 Wash) <b>1 sample additional!</b>	ISO 6330 DIN EN ISO 6330/7A (wool)	Manor intern	/	+/- 5% +/- 8% for Wool, semi wool and similar Hollow mesh, lace and loose structures are exempt. (GB)		x	x	
20	Dimensional stability to dry cleaning (1 Dry-clean, if applicable)	Commercial method	Manor intern	/	+/- 3%		x	x	
21	Spirality	ISO 16322-2	Manor intern	/	Knitted items: 5% ; IWS (wool and animal hair) 5%		x	x	
22	Color fastness to Perspiration	ISO 105/E04	Manor intern	/	Color change: 3-4		x	x	
23	Color fastness to water	ISO 105/E01	Manor intern	/	Grade 4		x	x	
24	Color fastness to rubbing, dry	ISO 105/X12	Manor intern	/	Grade 4 Dark Microfiber, Pigment , Indigo - 3-4 „peached“ Flor ware- 3 Garment dyeing -3		x	x	
25	Color fastness to rubbing, wet	ISO 105/X12	Manor intern	/	Grade 3 Dark Microfiber, Pigment , Indigo 2-3 „peached“ Flor ware- 2 Garment dyeing -3		x	x	
26	Color fastness to saliva	DIN 53160-1	Manor intern	Till 3 years (size 50- 98)	Grade 5		x	x	
27	Pilling Martindale (Only for flat knitting) Only for the front. Exempt: sanding, raising, flocking on the front ; hollow mesh, lace structures.	ISO 12945-2 (1000 revs.) (1 wash)	Manor intern	/	Grade 3-4 after 1000 revs (knit)		x	x	
28	Pilling for Cashmere and cashmere blends	ISO 12945-1/ ISO 6330 (1 wash)	Manor intern	/	Pure cashmere: Grade 3 (10,800 revs). Cashmere blend: Grade 2-3 (10,800 revs)		x		
29	Pilling for wool an other animal fibers	ISO 12945-1/ ISO 6330 (1 wash)	Manor intern	/	Grade 3-4 (10,800 revs) (Without cashmere) >20%-100% wool or other animal hair		x		
30	Flammability (for high-pile, Flor ware)	EN 1103	SR 817.23.41 (CH)	/	For high-pile, Flor ware only: no Surface Flash		x	x	

## Product specific requirements: 005. 2nd Layer Casual knitted

Version: 3.1  
Last update: 10.06.2022

Material	Material Art	Products	Age Group	HS Code
Fibers	Knitted	Pullovers, Cardigans, Vest, Dresses and similar knitted items	women, men kids, baby	6103, 6104, 6110, 6111



No	Parameter	Method	Reference	Age group	Requirement	Materials				
						Plastics - PU, PVC, Rubber, TPU	Textiles Natural	Textiles Synthetic	PU Coating, Printing	
<b>Accessories</b>										
31	Metal Parts with skin contact: <b>Nickel</b>	EN 12472:2020 / EN 1811:2011 + A1:2015	SR 817.023.41 (CH)	/	Nickel: <u>Manor &lt; 0,5 µg/cm<sup>2</sup>/Week</u>	Related to the whole product				
32	Plastic Parts with skin contact: <b>Cadmium</b>	Non-leather: EN 16711-1	SR 814.81 (CH)	/	Cadmium 100 mg/kg (Swiss Regulation) Manor: 40 mg/kg (Manor Regulation)	x			x	
<b>Attachments' strength</b>										
33	Decoration elements	CEN/TS 17394-2	Manor intern	/	Parts ≥6 mm not > 6mm:  CEN/TS 17394-2 Textiles and textile products - Part 2: Safety of children's clothing - Security of attachment of attachment of buttons-test method.  CEN/TS 17394-3 Textiles and textile products - Part 3: Safety of children's clothing - Security of attachment of metal mechanically applied press fasteners-test method  CEN/TS 17394-4 Textiles and textile products - Part 4: Security of children's clothing - Security of attachment of components except buttons and metal mechanically applied press fasteners-test method	Related to the whole product				
34	Small parts; sharp point, sharp edge	EN-71-1	Manor intern	Till 14 years	(< 36 months) No small parts; (< 14 years) No sharp point; (< 14 years) No sharp edge.	Related to the whole product				
<b>Label</b>										
35	Labeling (with Care Instruction)	EU (Nr) 1007/2011	Ginetex Manor intern	/	Trademark Manufacturer's name (name, address in EU) Made in ... Size (opt. age for children) Care instructions (according to Ginetex) Fiber composition in % (EU 1007/2011) <b>In 1 Swiss official language (DE / IT / FR)</b>	Related to the whole product				
36	Care Instruction	Ginetex	Ginetex Manor intern	/	  Mandatory in following order: washing-bleaching-drying-ironing-professional textile care Opt. Wash with similar colors/ Opt. Wash separately	Related to the whole product				
37	Marking for fur or leather details/ parts	EU 17211	EU 1007/2011	/	D: "Enthält nichttextile Teile tierischen Ursprungs" F: "Contient des parties non textiles d'origine animale" IT: "Contiene parti non tessili di origine animale" E: "Contains non-textile parts of animal origin"	Related to the whole product				